

PERFECTING OUR PARTNERSHIP

THREE
RIVERS



PLANNING & DEVELOPMENT DISTRICT, INC.

PROMOTING ECONOMIC & COMMUNITY DEVELOPMENT

FISCAL YEAR 2014 ANNUAL REPORT

COMMUNITY & ECONOMIC DEVELOPMENT DIVISION

The Community and Economic Development Division’s primary role is to provide assistance to Local Governments on issues related to Economic Development and Community Improvements. The most recognizable function is through the preparation and administration of grant and loan applications. The division also provides management support services, special project implementation, and remains flexible in providing assistance to Local Governments as new needs arise.

The division maintains a close working relationship with local, state, and regional economic developers by assisting in the preparation of financial packages and supporting their recruitment and expansion efforts. In addition, the division provides administrative services for the North Mississippi Mayors Association, The PUL Alliance, Three Rivers Community Development Entity (CDE), the CodeRED Emergency and Weather Warning System, the Tammy Wynette Legacy Park, and household hazardous waste collection days.

FY 14 GRANTS

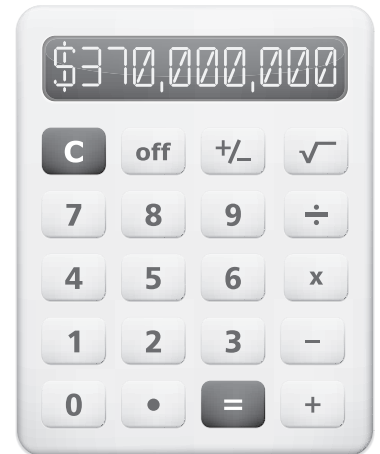
Economic Development Administration (EDA)	\$ 1,477,327
Appalachian Regional Commission (ARC)	\$ 722,615
Community Development Block Grants (CDBG)	\$ 1,666,400
Other Mississippi Development Authority Program Grants	\$ 2,627,587
Miscellaneous Grants	\$ 1,853,375
<hr/>	
TOTAL	\$ 8,347,304

FY 14 COMMUNITY IMPROVEMENT LOANS

TOTAL	\$ 3,391,555
--------------	---------------------

FY 14 HIGHLIGHTS & ADDITIONAL SERVICES

- Application Preparation, Management, and Administrative Services provided for 104 active projects
- 43 Grant Applications approved
- 8 Loan Applications approved
- Industrial Recruitment Assistance Program
- 2 Household Hazardous Waste Collection Days
- Prepared New Market Tax Credit Allocation request to the Department of Treasury



Grants to Local Governments: \$370 Million & Counting.....

DISASTER RECOVERY ASSISTANCE

When a major Tornado outbreak hit Lee and Itawamba Counties in April of this year, Three Rivers was able to provide disaster recovery assistance to the Local Governments in those areas hardest hit. Based on lessons learned from previous disasters, we knew that one of the major needs for Local Governments would be cash flow while they waited on State & Federal Funding to become available. Zero Percent Interest (0%) loans totaling \$2.5 Million were made to the City of Tupelo and Lee & Itawamba Counties to cover those gaps and help the cleanup & recovery activities progress as soon as possible. These funds, along with the experience of working with State and Federal agencies on prior disaster projects, allowed for staff to provide Technical Assistance to help these communities rebuild.

TAMMY WYNETTE LEGACY PARK

Three Rivers was recently selected to provide administrative services in the development of the “Tammy Wynette Legacy Park.” This project, funded in part by the Mississippi Legislature and private donations, will establish a historic museum site dedicated to the “First Lady of Country Music” in Tremont, MS. The project is expected to have a substantial positive impact on Tourism in the region as well as honor another one of North Mississippi’s cultural icons.

REGIONAL DEVELOPER PROGRAM

The division also provides staffing on a contract basis to Chickasaw, Pontotoc, and Union Counties to promote the industrial recruitment and business retention and expansion efforts of those Counties.

In 2014, this partnership included the marketing of 2,600 acres of greenfield sites and over 600,000 square feet of industrial space to new industries. The existing business efforts included semi-annual support visits with the principals of 44 member county industries. In 2014, the location of new industries and existing business expansion projects culminated in the re-occupancy of 300,000 square feet of industrial space and the creation of over 300 new jobs in the service area.

LOAN DIVISION SUMMARY REPORT

For the past 29 years, Three Rivers Planning & Development District has offered financing options to Small Business Concerns for their business needs. These funds are used to assist in business start-ups, business expansions, and the purchase of existing businesses. The primary advantages of the loan programs are low equity injection, low fixed interest rates and long term financing. These programs partner with participating banks, with each loaning a portion of the project cost. Three Rivers offers several different loan programs and will match the business needs to the program that best fits the business venture.

All small business loans originated by Three Rivers are derived from the following funding sources: Appalachian Regional Commission, Economic Development Administration, Rural Development Administration's Intermediary Relending Program, Mississippi Small Business Assistance Loan Program, Minority Business Loan Fund, and the Small Business Administration's 504 Loan Program.

The following is a summary of our loan division's portfolio as of September 30, 2014:

Total amount of CDC loans outstanding (principal only)	\$ 28,186,012.80
<u>Total amount of CDC loans committed not yet funded</u>	<u>18,405,000.00</u>
Total CDC	\$ 46,591,012.80
Total amount of PDD loans outstanding (principal only)	\$ 14,819,707.75
Total amount of PDD loans committed	1,179,427.00
<u>Total amount of funds available (not committed)</u>	<u>4,924,070.92</u>
Total PDD	\$ 20,923,205.67
<u>Total CDC and PDD Fund Balance</u>	<u>\$ 67,514,218.47</u>
<u>Total number of projects closed</u>	<u>672</u>
<u>Total amount loaned (CDC and PDD)</u>	<u>\$148,870,685.00</u>
<u>Total amount leveraged by the Three Rivers loan funds</u>	<u>\$510,403,989.00</u>
<u>Loan-Loss Percentage Program to Date (PDD loan only)</u>	<u>1.11%</u>

Three Rivers loan programs have helped create and retain a total of 14,498 jobs.

DIVISION OF GOVERNMENTAL FUNCTIONS

The Division of Governmental Functions provides a wide variety of both administrative and technical services to local governments and other related entities. The following highlights some of the projects worked and/or services started or provided during the 2013-14 fiscal year:

- Provided technical support to the E-911 Districts in seven counties.
- Provided responses to approximately 1,000 requests for information technology (IT) support (hardware, software, network, etc.) with almost 11,000 total requests for IT assistance responded to since the inception of the "Request for Support" email system was implemented in 2009.
- Continued to work in partnership with Mississippi State University nSPARC in administering the County Records Management System (CRMS) software system. This software system is in place in ten counties and is open-source, public domain software that is available statewide for any County to use as a document management system. In addition, the original backup system for CRMS was replaced with a new technology that no longer requires the use of tapes as the backup medium. Also, the computer servers initially in place for CRMS were replaced using new "Virtual Technology" whereby backups for the software system are performed both at the County level and at the Three Rivers Data Center in Tupelo, enhancing disaster recovery opportunities for the system. Phase 2 of the CRMS project (estimated to be implemented in the 2014-15 fiscal year) will allow a County to publish all the public records managed by CRMS on the "world-wide-web" for access by any person that has a computer with internet access.
- Provided accounting software and support for twelve counties and two cities.
- Provided computer network connectivity, website and email hosting, and computer network security services for a customer base of over 1,000 local government users.
- Provided AS-400 mainframe computer hosting services for five counties and one municipality.
- Provided solid waste collection system design and operation assistance to multiple cities and counties.
- Conducted successful Household Hazardous Waste Collection Days in both Lee County and the City of Oxford.
- Three Rivers Solid Waste Management Authority -
 1. Maintained its landfill tipping fee at the PRE-1997 price of \$22.00 per ton for "ALL" residential, commercial and industrial customers in the Authority's region.
 2. Began renovation of the three Authority's Transfer Stations located in Lafayette, Lee and Monroe counties.
 3. Constructed a new Recycling & Convenience Center at the Three Rivers Regional Landfill.
 4. Continued to market Authority-owned surplus land situated adjacent to the Three Rivers Regional Landfill for economic development projects.
 5. In partnership with the Tennessee Valley Authority and Pontotoc Electric Power Association, the Authority continually generated up to 999kwh of electricity from methane gas produced by the Landfill and returned that electricity to the "grid" for use by residents and businesses in the area.
 6. Continued to co-operate through an MOI (Memorandum of Intent) with Enerkem Mississippi Bio-fuels, a wholly-owned subsidiary of Enerkem, to determine the feasibility of constructing and operating a bio-refinery and Materials Recovery Facility for feedstock production and recycling at the regional landfill near Pontotoc.
 7. Continued to provide regional waste tire and white goods (scrap metal) collection and recycling programs.

TUITION ASSISTANCE PROGRAM

The District continued to administer the Tuition Assistance Program (TAP), a partnership created for Counties (and their partners) in the District that will allow graduating high school seniors to receive tuition assistance for four (4) regular semesters at a Community College. The TAP is a ten (10) year program with a \$25,000 maximum grant per year from the District that requires a local/private match equal to the lesser of 4 to 1 or the equivalent of what one (1) mill will produce in the participating County. The TAP is administered by the District through a contract at no cost to participating Counties. Students in participating Counties that wish to apply should contact their Community College Financial Aid Department for details. Federal and State grants, scholarships and VA benefits shall be applied first toward tuition with the TAP being the last funding source applied. Participating students shall enroll in and successfully complete twelve (12) semester hours and maintain a 2.0 grade point average throughout the program. The TAP served several hundred students in the District during both the Fall 2013 and Spring 2014 semesters.

TANGLEFOOT TRAIL™

The GM&O Rails-to-Trails Recreational District of North Mississippi (District) is comprised of the partnership of Union, Pontotoc and Chickasaw counties along with the municipalities of New Albany, Pontotoc, Ecran, Algoma, New Houlika and Houston. These counties and municipalities developed and provide support for the growing success of the Trail. In September 2013, the multi-use recreational trail, known as the Tanglefoot Trail™, joined the national ranks of rails-to-trails projects and officially opened for public use. The paved trail provides a safe and scenic route for bicyclists, walkers, runners and others that live in our local communities as well as drawing visitors from multi-state and international destinations. Construction of Trail facilities such as Whistle Stop comfort stations, rest stops and rain stops has been completed. Planning and addition of other facilities, including pavilions, and further amenities will continue in the near term. The positive impact to the local economy has been seen by the increase of visitors to our area and the opening of new businesses along Trail towns and counties. Local businesses and citizens are embracing this regional asset by providing sponsorship support which assists the District in continuing enhancements and growth along the trail.

RESEARCH & ANALYSIS DIVISION

The Research & Analysis Division provides services and support to Three Rivers and its partners in areas such as demographic analysis, geographic information systems (GIS), web development, graphic design, planning, research, and asset mapping. The Division works with other Three Rivers' team members as well as local, regional, state, and federal officials to advance economic and community development throughout northeast Mississippi.

FY 2014 SUMMARY

The Research & Analysis Division produced 240 maps and 376 data profiles in FY 2014. The maps and profiles were used for funding applications, industrial marketing, redistricting, and various other purposes.

In addition, the Division continued to develop and maintain Three Rivers' website in order to ensure it remains a viable regional resource. The website contains a wealth of information to assist Three Rivers and its partners as they seek to facilitate growth opportunities. Each division has a designated section on the website that outlines its services, support, and/or programs. The site also includes additional sections and items that are pertinent to Three Rivers, its partners, and the region as a whole.

The Research & Analysis Division also continued to partner with the Governmental Functions Division to host and maintain the Mississippi Chancery Clerks Association website. The site provides the Association with a productive online presence as well as a medium for clerks to interact and share pertinent information with one another.

In September, the Division secured a grant award from the Appalachian Regional Commission (ARC) that will enable Three Rivers to develop websites for six counties (Calhoun, Chickasaw, Itawamba, Lee, Pontotoc, and Union) and six municipalities (Aberdeen, Bruce, Calhoun City, Fulton, Pontotoc, and Vardaman) located within ARC's service area. The website development project will enhance the 12 local governments' web identities and help them as they seek to attract private investment and job creation to the region.

In addition to generating maps, data profiles, and websites, the Research & Analysis Division also produced a wide variety of documents for Three Rivers and its partners. The documentation ranged from grant-related forms for the Community & Economic Development Division to a Tax Increment Financing (TIF) Redevelopment Plan for Calhoun City. The Division will continue to expand its services and support within this realm in order to address regional and organizational needs.

The Research & Analysis Division administered Three Rivers' Rural Community Development Initiative (RCDI) grant and Economic Development Administration (EDA) planning grant during the fiscal year as well. The identified investments go hand-in-hand with Three Rivers' mission and have enabled the organization to partner with local officials on several successful economic and community development projects in its eight counties.

Additionally, the Division assisted Lee County with collecting, preparing, and disseminating information to the Federal Emergency Management Agency (FEMA) and Mississippi Emergency Management Agency (MEMA) following the devastating tornadoes that impacted our region in April 2014. The technical assistance was primarily involved in helping Lee County and FEMA develop project worksheets that identified labor and equipment hours employed by the County in the aftermath of the storm as well as other associated costs pertinent to the disaster recovery process.

Finally, the Research & Analysis Division continued to provide representation for the State of Mississippi on the Rural Planning Organizations (RPO) Council of Peers and functioned as the organization's primary point of contact for data inquiries in FY 2014. Three Rivers is an affiliate of the State Data Center of Mississippi and the Research & Analysis Division provides assistance to individuals requiring demographic services and support. Several of the aforementioned data profiles relate back to requests the Division received as a result of its affiliate designation.

**THREE RIVERS SOLID WASTE FEE BILLING
ANNUAL REPORT
OCTOBER 1, 2013–SEPTEMBER 30, 2014**

	Revenue Collected	Accounts Billed
Calhoun	\$347,872.08	37,036
Itawamba	\$1,090,286.11	83,015
Lafayette	\$1,105,390.76	112,885
Lee	\$1,806,806.41	170,395
Monroe	\$1,244,126.08	98,819
Pontotoc	\$905,651.69	95,476
Union	\$764,553.66	83,998
Benton Waste, Inc.	\$24,786	213
Newton		22,955
Prentiss		59,106
Kemper	\$42,577.76	6,382
TOTAL	\$7,332,050.55	770,280

The Three Rivers fee billing software package was developed and launched by the Three Rivers Planning & Development District in 1993 and has served the solid waste and utility fee billing needs for both local government and commercial entities since that time. Presently, entities being served by the fee billing software package are Prentiss, Lee, Itawamba, Monroe, Union, Pontotoc, Calhoun, Lafayette, Kemper and Newton counties as well as Golden Triangle Solid Waste and Benton County Solid Waste.

The Three Rivers fee billing software typically resides on an AS400 computer and can provide “full service” or “partial service” option applications for use in billing and accounting for customer solid waste or utility payments.

Over this past year, the Fee Billing department made online payments available. Customers can now pay their solid waste bill online or make payments by phone. The Solid Waste department is averaging 416 online payments per month for an average total of \$18,106. We would also like to welcome Kemper County to our Three Rivers Solid Waste team. We began billing for Kemper County in August 2014.

WIA DIVISION

SNAPSHOT PY 2013 ACTIVITIES

Funding Stream	Allocation
WIA Adult	\$2,066,107
WIA Dislocated Worker	\$1,722,185
WIA Youth	\$2,181,298
Tornado NEG	\$1,500,000
Make It In America	\$1,800,000
MDA - Roxul, Inc.	\$175,000
MDA - Grammer AG	\$50,000
MDA - Posturecraft Mattress	\$50,000
MDA - Three Rivers Application & Recruitment Specialist - Yokohama	\$70,000
TOTAL	\$9,614,590

THE MISSISSIPPI PARTNERSHIP

Adult, Dislocated Worker, and Youth Programs

Three Rivers PDD serves as the Fiscal and Administrative Agent for the Mississippi Partnership Local Workforce Area. MPLWA is the largest geographical workforce area in the state consisting of 27 counties. Not only are we the largest, we are also the most successful workforce area in the state. Once again this year, we were awarded the highest amount of incentive funds in the state (over \$60,000) because of our exceptional performance numbers. We are proud of this achievement and even prouder that we accomplished this for several years in a row.

Twelve WIN Job Centers are located throughout the Mississippi Partnership service area. WIN Job Centers provide services that meet workforce needs based on the local economy. The WIN Job Centers are focused on both the potential employee and the business owner. In PY 2013 over 38,000 individuals received some form of service through our WIN Job Center offices.

Of over 3,700 enrollees in our WIA programs, 58% of them received training services in the form of On-the-Job Training or Individual Training Accounts. We expended over \$1.2 million on OJT, or 90% of our OJT allocation, and over \$350,000 for ITA's for a total of 89% of our ITA allocation. Our hands-on approach to disbursing these funds and our management style have ensured that we have adequate training dollars available to serve the needs of our employers for expansions and new start-ups when those needs occur.

The Three Rivers C2C Youth program remains a national model. Under the new WIOA legislation that Congress passed in July of 2014, our youth program already exceeds the requirements of the new act and we have made major presentations to national conferences showcasing that highly successful program. In PY 2013 we expended over \$2 million providing the hardest to serve youth in our 27 county area with work ethics training, basic skills training, team work training, and paid work experience. For many of our youth participants, we helped them get their first job.

On April 28, 2014, North Mississippi was hit with a series of tornadoes. The Federal Emergency Management Administration (FEMA) issued a disaster declaration identifying 4 counties in the MS Partnership region as eligible for federal disaster assistance. The Mississippi Partnership utilized Tornado NEG funds to create temporary jobs to assist with recovery efforts in the 4 counties that were impacted by the storm. The MS Partnership has served almost 200 participants in the temporary employment program funded by NEG.

Here's a statement by Mayor Will Hill of Louisville: "Let me first begin by saying thank you for your assistance in the NEG program for our community in the aftermath of the devastating tornado of April 28th. The program itself has been such an incredible help to our City and has given hope to many who lost their job because of the unfortunate event. This program has meant so much and we have benefited greatly from it. As a result, I now humbly write to you in a request to further extend or secure funding to continue with the program for individuals who are filling vital roles for our community as we strive to recover. These individuals have either lost their business or displaced due to the storm."

We were also successful in getting an extension of the Tornado NEG approved. To date, we have expended over \$1.7 million in providing employment for citizens that lost their jobs due to the tornado. Not only were we able to help these individuals earn wages, the communities involved have been able to have help in clean-up, rebuilding, and enhancing programs that they may not have had the financial ability to operate without the assistance of the Three Rivers Tornado National Emergency Grant. This program is ongoing and has been extended from the original 6 months or \$12,000 per participant to 12 months or \$24,000 per participant.

The Mississippi Development Authority contracted with Three Rivers to provide application and recruitment services for the hiring of personnel for the new Yokohama Tire Manufacturing plant being constructed in West Point. Yokohama is seeking 500 employees in Phase One of their process and at completion of all phases will employ 2000 individuals. We will be providing Three Rivers staff members in various locations throughout the area to assist individuals with the application and hiring process and ensure that Yokohama is successful in finding the qualified workforce needed to operate one of the world's most sophisticated and highly technical tire manufacturing facilities.

THREE RIVERS MISSISSIPPI ACCESS TO CARE

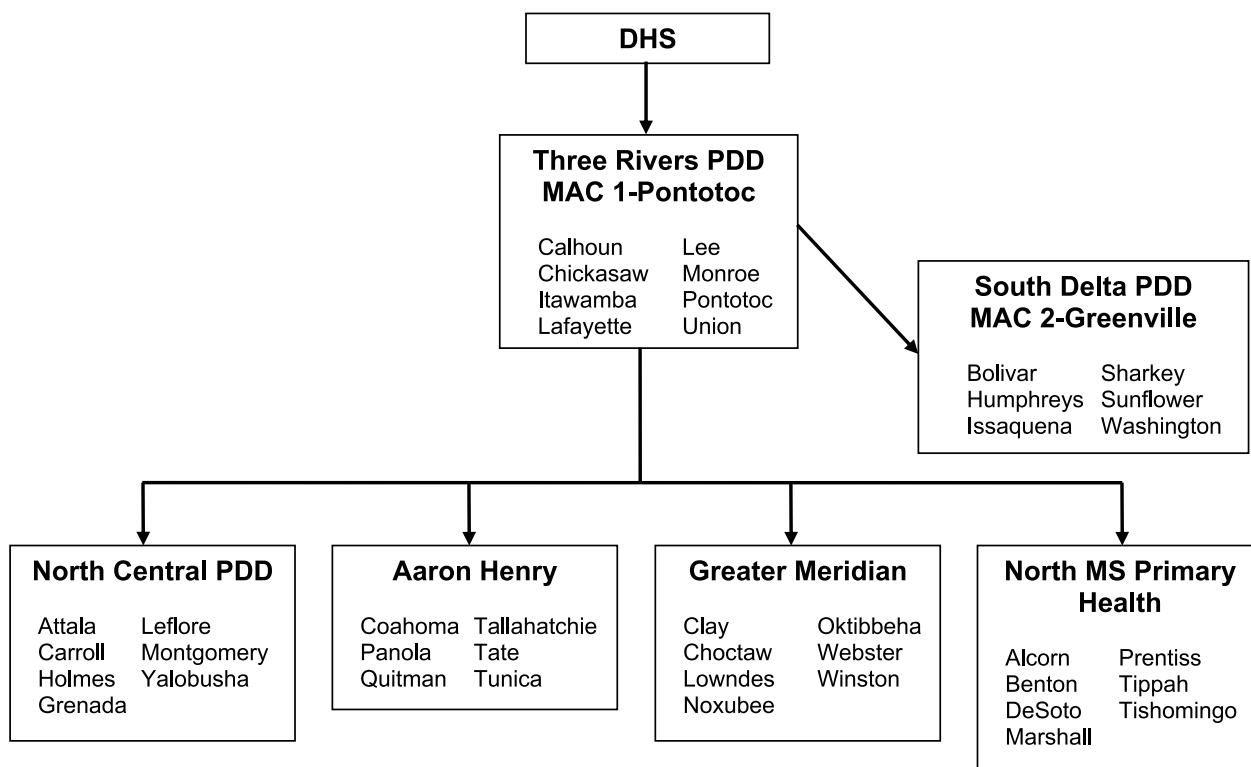


In January of this year, Three Rivers began working on a response to a Request for Proposals to administer a new program in Mississippi in partnership with the Division of Medicaid and the Department of Human Services. In April of this year Three Rivers was awarded the contract to administer and operate the MAC project in the northern 41 counties of Mississippi.

The concept of MAC is to assist our citizens with a single point of reference to any questions they may have concerning long term care opportunities for themselves or their family members. Prior to the creation of MAC, an individual may have to seek answers to questions from various different agencies making the process time consuming, burdensome, and overly complicated for many of our citizens. Through one single toll free number, a person in any of our 41 county area may now reach the Three Rivers MAC Center and all of their questions may be researched and answered by our trained network of Three Rivers staff. The Three Rivers MAC team will listen, assess and refer those contacting us to a network of partners that we have assembled to meet the needs of our citizens in the 41 county area.

The MAC Center officially opened for business in October and a major public awareness campaign is now taking place statewide. The mission is to help Mississippians secure needed services or benefits, live with dignity and security, and achieve maximum independence and quality of life. The goal of the MAC Center is to empower people to make informed choices and to streamline access to services and supports. Part of our role is to provide welcoming and accessible places where people can obtain information and assistance in locating services or applying for benefits. We provide a central source of reliable, objective, and unbiased information about a broad range of programs and services and help people understand and evaluate the various options available to them. By enabling people to find resources in their communities and make informed decisions about long-term care, the Three Rivers MAC Center helps people conserve their personal resources, maintain self-sufficiency, and delay or prevent the need for potentially expensive long-term care. Each of these services is available regardless of income or eligibility for publicly funded long-term care. Consultation, information, and referral to needed services and support are provided at the MAC Center, over the telephone, in the person's home, and at other locations if requested.

In order to provide these services in the 41 counties that are included in the Three Rivers MAC jurisdiction, we designed a network that partners with several different providers including South Delta Planning and Development District, North Central Planning and Development District, Greater Meridian Health Services, Aaron Henry Health Services, and North Mississippi Primary Healthcare. Below is our organizational chart that shows our partners and their respective service counties.



THREE RIVERS AREA AGENCY ON AGING FISCAL YEAR 2014 ANNUAL REPORT

Three Rivers Area Agency on Aging continues to partner with North Mississippi Rural Legal Services to sponsor the annual Elder Law Conference held at the University of Mississippi Law School.

The Senior Community Service Employment Program (SCSEP) experienced an increase in the number of participants that we can now service. We have increased from 21 positions to 22 positions in Union, Pontotoc, and Lee counties. We were the only PDD in the state that received an extra position this year.

The Aging Division received funding from the United Way of Northeast Mississippi and the Oxford/Lafayette County United Way. This funding is for the counties of Pontotoc, Itawamba, Union and Lafayette.

We are continuing our work with the Centers for Medicare and Medicaid Services Community-Based Care Transitions Project (CCTP). From April 2013 to April 2014, we have served 662 patients. Our 30-day readmission rate is 14.9%. This is 5.1% lower than CMS's requirement. We provide care transition in our eight-county area as well as in Clay and Webster Counties. We are partnering with the following hospitals: North Mississippi Medical Center and their satellite hospitals, Calhoun Health Services, Trace Regional Hospital, Baptist Memorial of Oxford, and Gilmore Hospital. We are also partnering with the following Nursing Homes, Hospice Agencies, and Home Health Agencies: Golden Living, Gentiva, Sunshine Health Care, Baptist Home Care, Graceland Care Center, and North Mississippi Health Services.

Three Rivers Area Agency on Aging partnered with three rural health care agencies to serve our clients within our eight-county area. We are partnering with the Oxford Medical Ministries Clinic in Oxford; Agape Health Services in New Albany; and ACCESS Family Health Services in Smithville. We are providing them with Preventive Health Funds to provide health care services and supplies to people aged 60 and up in our service area.

The Aging Division partnered with the Lee County Sheriff's Department to sponsor a Senior Citizen Fall Festival on October 24th, 2014. Over 200 participants attended. On December 12, 2014, the Area Agency on Aging will host our 7th Annual Senior Christmas Day. It will be held at the Lee County Agri-Center in Verona, MS. We will have vendors, Christmas gifts, a Christmas meal with the trimmings, fruit, entertainment, and good fellowship. We are expecting 400 to 500 participants.

Listed below is a detailed report of the number of clients and the type of service that they received by funding source. The numbers only reflect the Three Rivers area. All totals are from October 1, 2013 to September 30, 2014.

I. Title XX & Title III

Homemaker & Respite Services

Clients-836
Units-42,381

Transportation

Clients-121
Units-46,905

Adult Day Care

Clients-27
Units-1,704

Prescription Assistance Program

Clients-628
Units-857

II. Title III

Information, Referral, and Assistance

Clients-3,053
Units-3,053

Ombudsman

Clients-6,298

Legal Assistance

Clients-126

Outreach

Clients-1,796
Units-1,796

Senior Center Activity

Clients-36
Units-5,322

III. Title III, XX, State Meals & MW

Congregate & Home Delivered Meals

Clients-1,611
Units-336,498

IV. SHIP

Clients-3,855
Units-3,941

MEDICAID WAIVER DIVISION ELDERLY AND DISABLED WAIVER ANNUAL REPORT FY 2013/2014

The Three Rivers Elderly & Disabled Waiver Program served an annual total of 1,803 clients.

The total number of services received by all projects was:

Personal Care Service.....	1,171,264 hours
In-Home Respite.....	128,090 hours
Home Health Aide.....	12,742 visits
Medicaid Only Skilled Nursing.....	127 visits
Medicaid Only Physical Therapy	6 visits
Adult Day Care	9,410 hours
Home Delivered Meals.....	146,077 meals

ELDERLY AND DISABLED WAIVER HOME AND COMMUNITY-BASED SERVICES

What is the Elderly and Disabled Waiver?

The Elderly and Disabled (E&D) Waiver is a statewide program designed to offer assistance to qualified Medicaid beneficiaries. The program allows qualified individuals to remain in a home or community-based setting as an alternative to nursing facility care or other institutional care.

Who is Qualified:

- Beneficiaries must be 21 years of age or older.
- Persons qualify by either SSI or 300% of SSI.
- Beneficiaries must score 50 or above on the Medicaid Long Term Care Pre-Admission screening (PAS) instrument.
- Persons must require nursing facility level care, if assistance is not provided.

All persons who are eligible to receive Home and Community-Based Services under this waiver must first be approved through the Division of Medicaid.

What Services Are Offered Under This Waiver?

Those eligible for Home and Community Based Services will be eligible for the following services:

- Case Management: Everyone who participates in the waiver is assigned to a local case management team. This team consists of a Registered Nurse and licensed Social Worker. They are responsible for managing and coordinating the services for each participant.
- Personal Care Services (PCS): These are supportive services provided in the home of the participant. They include assistance with light housekeeping, laundry, meal preparation, marketing, grooming, medication reminder and accompanying the beneficiary to the doctor.
- Adult Day Services: This is a structured program that focuses on the strengths and abilities of the participants. This service allows participants to contact connections with their community and/or use all of their retained skills. Depending on the specific facility, the following services are provided: supervision and/or assistance with ADL's group activities, nutritious meals, and medication monitoring.
- Expanded Home Health Services: The participants of this program will be eligible for extended home health

services. Covered services include: nurse, aide, physical, and speech therapy.

- Home Delivered Meals: A well-balanced meal is delivered to the home of the person who is unable to leave his/her home without assistance and/or unable to prepare his/her own meals.
- Non-Emergency Transportation (NET): This is offered for the frail beneficiary and may be used to facilitate trips to the doctor and dialysis, when the participant has no other means of transportation.
- Institutional Respite and/or In-Home Respite: This is provided to participants on a short-term basis because of the absence of or need for relief for the primary care giver. This can be provided in the home or other licensed respite care centers.
- Transition Assistance: This is provided to a beneficiary currently residing in a nursing facility who wishes to transition from the nursing facility to the E & D Waiver.

FISCAL DIVISION

We prepare and report on approximately 100 individual budgets. Several different federal and state agencies frequently send monitors to make sure that Three Rivers is fulfilling its obligations, and we also work with independent auditors, Franks, Franks, Jarrell, and Wilemon. We are proud to say that we have had no uncleaned monitoring findings. We regularly receive an unqualified opinion on Three Rivers Planning and Development District's annual audit, as well as the Three Rivers Solid Waste Management Authority, The PUL Alliance and GM&O Rails-to-Trails Recreational District of North Mississippi annual audits. We provide fiscal administration for all of the following agencies:

- THREE RIVERS PLANNING & DEVELOPMENT DISTRICT, INC.
- THREE RIVERS EMPLOYEE MEDICAL BENEFITS TRUST
- GM&O RAILS-TO-TRAILS RECREATIONAL DISTRICT OF NORTH MISSISSIPPI
- THREE RIVERS AREA AGENCY ON AGING
- THE MISSISSIPPI PARTNERSHIP FOR WORKFORCE DEVELOPMENT, INC.
- THREE RIVERS SOLID WASTE MANAGEMENT AUTHORITY
- THE PONTOTOC, UNION, LEE ALLIANCE
- THREE RIVERS LOCAL DEVELOPMENT COMPANY, INC.
- THREE RIVERS RETIREMENT BENEFITS PLAN
- THREE RIVERS INVESTMENT CORPORATION
- NORTH MISSISSIPPI MAYORS ASSOCIATION
- THREE RIVERS COMMUNITY DEVELOPMENT ENTITY

<u>Total funds overseen during fiscal year</u>	<u>\$186,503,953</u>
<u>Processed over 3,278 checks, totaling over</u>	<u>\$30,564,632</u>
<u>Processed receipts totaling over</u>	<u>\$38,211,193</u>
<u>Maintained an overall average cash balance of</u>	<u>\$34,004,546</u>
<u>Total asset balance - See note</u>	<u>\$34,172,814</u>
<u>Total net assets - See note</u>	<u>\$29,371,583</u>
<u>Maintained payroll for 76 full-time, 45 part-time</u>	<u>\$4,088,293</u>

NOTE: Balances do not include assets of Three Rivers Solid Waste Authority, Three Rivers Employee Medical Benefits Trust, GM&O, The PUL Alliance, nor the Three Rivers Retirement Benefits Plan.

PERFECTING OUR PARTNERSHIP

As evidenced by this annual report, Three Rivers Planning & Development District is a much diversified and highly technical organization. The statistics and numbers reflected in this report show that we have been extremely successful in assisting local governments as they serve the citizens of our region. It takes good people to produce those statistics and numbers and therein is the true success of Three Rivers PDD. We accomplish nothing alone. We are proud to partner with the many individuals and organizations that allow us to share and assist in reaching their goals and dreams. We thank you for your dedication and service in your efforts to enhance the community and economic development opportunities of this region.

SUPERVISORS

CALHOUN Earnest Fox J. B. Rogers Gwin Longest Barney Wade Tony Morgan	LAFAYETTE Mike Pickens Jeff Busby Robert Blackmon Chad McLarty Mike Roberts	PONTOTOC Wayne Stokes Wayne Tutor Duane Tutor Ernie Wright Dennis Corder
---	---	--

CHICKASAW Anderson McFarland David Gene Walters Russell Brooks Jerry Hall Russell King	LEE Phil Morgan Bobby Smith Darrell Rankin Tommy Lee Ivy Billy Joe Holland	UNION Dwight Pickens Jimmy Yarbrough Danny Jordan Randy Owen Benny Rakestraw
--	--	--

ITAWAMBA Charles Horn Ike Johnson Steve Moore Eric Hughes Ricky Johnson	MONROE Doug Wiggins Billy Kirkpatrick Carol Crawford Fulton Ware Robert Tomey
---	---

CHANCERY CLERKS

Romona Tillman, Calhoun Wanda Sweeney, Chickasaw James Witt, Jr., Itawamba Sherry Wall, Lafayette	Bill Benson, Lee Ronnie Boozer, Monroe Gary Moorman, Pontotoc Annette Hickey, Union
--	--

CIRCUIT CLERKS

Carlton Baker, Calhoun Cassandra Pulliam, Interim Chickasaw Carol Gates, Itawamba Baretta Mosley, Lafayette	Joyce Loftin, Lee Judy K. Butler, Monroe Melinda Nowicki, Pontotoc Phyllis Stanford, Union
--	---

COUNTY ADMINISTRATORS

Gary Franks, Itawamba Joseph Johnson, Lafayette Sean Thompson, Lee	Michael P. King, Monroe Terry Johnson, Union
--	---

ATTORNEYS FOR BOARDS OF SUPERVISORS

Sonny Clanton, Calhoun Gary Carnathan, Chickasaw Bo Russell, Itawamba David O'Donnell, Lafayette	Gary Carnathan, Lee David Houston, Monroe Phil Tutor, Pontotoc Thad Mueller, Union
---	---

COMMUNITY COLLEGE PRESIDENTS

Mr. Mike Eaton, Itawamba Dr. Johnny Allen, Northeast MS Dr. Gary Spears, Northwest MS	Dr. Billy Stewart, East Central Dr. Rick Young, East MS Dr. Jim Haffey, Holmes
---	--

U.S. SENATORS

Hon. Thad Cochran Mindy Maxwell	Hon. Roger Wicker Drew Robertson
------------------------------------	-------------------------------------

U.S. REPRESENTATIVES

Hon. Alan Nunnelee	Dr. Mabel Murphree
--------------------	--------------------

THREE RIVERS FULL BOARD OF DIRECTORS

Barney Wade Earnest Fox Tony Morgan C. R. Easley J. R. Denton Jerry Hall John Herrod, Jr. Anderson McFarland Samuel Buchanan Stacey Parker Roosevelt Blackmon Eric Hughes Lynette Weatherford Rickey Johnson	Danny Holley Jeff Busby Chad McLarty Robert Blackmon Mike Roberts Tommy Lee Ivy Cleavon Smith Phil Morgan Larry Johnson Nan Nanney Billy Kirkpatrick John Darden Robyn Tannehill	Brad Blalock Carol Crawford Fulton Ware Wayne Stokes Lena Chewe Duane Tutor Early McKinney Jeff Stafford Benny Rakestraw Danny Jordan Tim Kent Jim Owen Carolyn Estes Sherwin Haynie
---	--	---

MAYORS

Cecil Belle, Aberdeen Scott Fricker, Abbeville Harry Corder, Algoma Brad J. Blalock, Amory Michael James, Baldwin Dwight Devall, Big Creek Rita Gentry, Blue Springs Rudy Pope, Bruce J. R. Denton, Calhoun City Dock H. Gabbert, Derma Mark Baldwin, Ecu Lynette Weatherford, Fulton Anthony W. Downey, Gattman Bud Herring, Guntown George King, Hatley Jimmy Kelly, New Houlika Stacey Parker, Houston Jeff Butler, Mantachie Joe Rials, Myrtle Jimmy Taylor, Nettleton	Tim Kent, New Albany Louise Cole, Okolona Pat Patterson, Oxford Reda Bullard, Pittsboro Gloria Holland, Plantersville Jeff Stafford, Pontotoc Rex Smith, Saltillo Ronnie Hallmark, Shannon Ben Logan, Sherman Dale Weeks, Slate Springs Gregg Kennedy, Smithville James Hamilton, Taylor Johnny Coleman, Thaxton Billy Berry, Toccopola Pam Dines, Tremont Jason Shelton, Tupelo James M. Casey, Vardaman Robert Trice, Verona Patti Watkins, Woodland
---	--

REPRESENTATIVES

Randy Boyd Chris Brown M. Kevin Horan Margaret Ellis Rogers Mac Huddleston	Steve Holland Brian Aldridge Jerry Turner Brad Mayo Thomas U. Reynolds Nolan Mettetal	Preston E. Sullivan Jim Beckett Steve Massengill Donnie Bell Jody Steverson
--	--	---

SENATORS

Nancy Collins Gray Tollison	J. P. Wilemon, Jr. Nickey Browning Gary Jackson	Hob Bryan Russell Jolly
--------------------------------	---	----------------------------

COUNTY TAX ASSESSORS AND TAX COLLECTORS

Bill Malone, Calhoun Sue Eaton Ard, Chickasaw Tami Beane, Assessor, Itawamba Aaron Loden, Collector, Itawamba Sylvia Baker, Lafayette Mark Weathers, Assessor, Lee	Leroy Belk., Jr., Collector, Lee Mitzi Presley, Assessor, Monroe Pat Birkholtz, Collector, Monroe Van McWhirter, Pontotoc Randy Dunnam, Union
---	---

ECONOMIC DEVELOPERS & RELATED PARTNERS

Barbara Fox	Calhoun City Chamber of Commerce
Sheila Freely	Calhoun Economic Development Association
Phil Nanney	Union County Development Association
Ellen Russell	Pontotoc County Chamber of Commerce
Skip Scaggs	Monroe County Chamber of Commerce
Harvey Clements	Itawamba County Development Council
Perry Grubbs	Okolona Area Chamber of Commerce
Jim Blue	Vardaman Chamber of Commerce
Lori Tucker	Baldwyn Chamber of Commerce
David Rumbarger	Community Development Foundation
Shane Homan	Community Development Foundation
Greg Giachelli	Community Development Foundation
Karen Geddie	Community Development Foundation
Billy McCord	Bruce Chamber of Commerce
Joyce East	Chickasaw Development Foundation
Jon Maynard	Oxford-Lafayette Co. Chamber of Commerce
Joseph Geddie	North MS Industrial Dev. Association
Jamie Kennedy	Tennessee Valley Authority
Stephen Surlis	Tennessee Valley Authority
Amy Tate	Tennessee Valley Authority
Mike Armour	Appalachian Regional Commission
Sandra Perkins	Appalachian Regional Commission
Brent Christensen	Mississippi Development Authority
Jim McArthur	Mississippi Development Authority
Jay McCarthy	Mississippi Development Authority
Danny Liles	Mississippi Development Authority
Tracey Giles	Mississippi Development Authority
Sara Doss	Mississippi Development Authority
Joy Foy	Mississippi Development Authority
Wanda Land	Mississippi Development Authority
Steve Hardin	Mississippi Development Authority
Waverly Harkins	Mississippi Development Authority
Gil Patterson	Economic Development Administration
Phil Paradice	Economic Development Administration
Cliff Russell	USDA Rural Development Administration
Mark Holley	Mississippi Department of Transportation
Travis Wampler	Mississippi Department of Transportation
Brandon Presley	Northern Public Commissioner
Mike Tagert	Northern District Highway Commissioner
Bill Barry	Mississippi Business Finance Corp.
Pat Lewis	Mississippi Business Finance Corp.
James Carden	Small Business Development Center
Janita R. Stewart	U.S. Small Business Administration
Rhonda Fisher	U.S. Small Business Administration
Lewis Whitfield	CREATE Foundation
Mike Clayborne	CREATE Foundation
Mark Henry	Mississippi Dept. of Employment Security
Yolonda Boone	Mississippi Dept. of Employment Security
Melinda Bertucci	Mississippi Dept. of Human Services
Marissa Whitehouse	Mississippi Dept. of Human Services
H.S. "Butch" McMillan	Mississippi Dept. of Rehabilitation Services
Cindy Goodin	Mississippi Dept. of Rehabilitation Services
Paulette Johnson	Mississippi Division of Medicaid
Sandra Bracey-Mack	Mississippi Division of Medicaid
Mimmo Parisi	Mississippi State University
Steven Grice	Mississippi State University
Martin Duclos	Mississippi State University
Rusty Stevenson	Mississippi State University
Jennifer LeCates	Code Red
Amanda Sheffield	Tanglefoot Whistlestop Volunteer

JUDGES

Jacqueline Estes Mask	H.J. Davidson, Jr.	Jim S. Pounds
Talmadge Littlejohn, Jr.	Robert Q. Whitwell	Mike Malski
Michael P. Mills	Glenn Alderson	John Gregory
John E. Hatcher	Thomas J. Gardner, III	Charlie Brett
Andrew K. Howorth	Paul Funderbuck	Dorothy Colom
Robert W. Elliott	Kenneth M. Burns	Jim Roberts
	Sharion Aycok	

**THREE RIVERS LOCAL DEVELOPMENT CO.
BOARD OF DIRECTORS**

Randy Baker	Mike Roberts	Jerry Robbins
J. W. Kirkpatrick	John Herrod, Jr.	Reggie Collums
Tommy Chamblee	Bill Benson	Randy Owen
Danny Jordan	J.R. Denton	Thomas Griffith
Pat Lewis	Jackie Couch	Chad McLarty
David Walters		Greg Thames

**THREE RIVERS SMALL BUSINESS ASSISTANCE LOAN
REVIEW COMMITTEE**

Bo Collins	Jerry Morgan	Steve White
Angie Kinder	Fred Cook	Steve Gaskin
	Larry Russell	

REVOLVING LOAN REVIEW COMMITTEE

Randy Baker	Angie Kinder	Larry Russell
Bo Collins	Don McCarver	Steve White
Brad Stevens		Prentiss Turner

**THREE RIVERS SOLID WASTE MANAGEMENT AUTHORITY
BOARD OF DIRECTORS**

Kevin Payne	Mike Pitts	Don Patterson
Lynette Weatherford	Rick Faucette	Jeff Stafford
Bobby Jones	Carl Cadden	Tim Kent
Russ Heard	Cecil Belle	Tom Cooper
Romona Tillman		Brad Blalock

GM&O BOARD OF DIRECTORS

Jay Blissard	Joyce East	Sean Johnson
Chris Hutchinson	Jimmy Whitehead	Ray Collins
Jon David Naugher	Lee Nabors	Jimmy Kelly

PUL ALLIANCE BOARD OF DIRECTORS

Randy Owen	Danny Jordan	Bobby Smith
Tommie Lee Ivy	Dennis Corder	Wayne Stokes
Jason Shelton	Tim Kent	Jeff Stafford

CEDS COMMITTEE

Sheila Freely	Jon Maynard	Phil Nanney
Joyce East	David Rumbarger	James Williams
Harvey Clements	Skip Scaggs	Nadara Cole
	Ellen Russell	

SCHOOL DISTRICT SUPERINTENDENTS

Mr. Mac Curlee	Aberdeen School District
Mr. Tony Cook	Amory School District
Mr. Jason McCay	Baldwyn Public School District
Mr. Mike Moore	Calhoun County School District
Dr. Betsy A. Collums	Chickasaw County School District
Dr. William Steve Coker	Houston School District
Mr. Michael Nanney	Itawamba County School District
Dr. Adam Pugh	Lafayette County School District
Mr. Jimmy Weeks	Lee County School District
Mr. Scott Cantrell	Monroe County School District
Mr. Michael Cates	Nettleton School District
Mr. Jackie Ford	New Albany Public School District
Mr. Dexter Green	Okolona Municipal School District
Mr. Brian Harvey	Oxford School District
Ms. Karen Tutor	Pontotoc City Schools
Mr. Kenneth Rode	Pontotoc County School District
Dr. Gearl Loden	Tupelo Public School District
Mr. Ken Basil	Union County School District

**THE MISSISSIPPI PARTNERSHIP WORKFORCE
INVESTMENT AREA**

CHIEF ELECTED OFFICIALS

Doug Burgess	Eric Hughes	Harry Sanders
Jeff Busby	Danny Jordan	Tony Sandridge
Larry Duran	Luke Lummus	Wayne Stokes
Kary Ellington	Chris McIntire	Eddie Stroupe
Nelson Forrest	Nicky McRae	Tommy Vaughn
Mark Gardner	Phil Morgan	Barney Wade
Lowell Hinton	William Oliver	Patti Watkins
Marvell Howard	Jimmy Pipkin	Doug Wiggins, II
Mike Huddleston	Darrell Robinson	George Zinn, II

WORKFORCE BOARD MEMBERS

John Adams	Dale Grove	Linda Presley
Dwayne Blackmon	Jeff Hudson	Barry Rowland
Michael Byrd	Mitzi Lawrence	Jack Savely
David Campbell	Ray McClellan	Beverly Smith
Terry Choate	Shermila McKinney	Chad Spence
Rhonda Chrestman	Pam Meeks	Gregory Taylor
Colt Doom	Gerald Mills	Christie Webb
James Dye	Joe Morton	Jill West
Bob Farrar	Mark Nichols	Tommy Whitehead
Mary L. Gates	Bruce Patel	James Williams
	Sharrell Polk	

AREA ON AGING ADVISORY COUNCIL MEMBERS

Eula Baker	Pat Henry	Shirley Rice
Jacqueline Jennings	Jay Keith Miller	Peggy Robinson
Verna Butler	Dr. JoAnn O'Quin	Juanita Smith
Diane Lindsey Wilemon	Sylvia Pegues	Denise Tutor
Mack Allen Thomas	Bob Corban	Shelton Shannon

THREE RIVERS HEALTH CARE COALITION

Three Rivers PDD/Area Agency on Aging
 Golden Triangle PDD/Area Agency on Aging
 Baptist Memorial of Oxford
 North Mississippi Medical Center – Tupelo
 Pontotoc Health Services, Pontotoc, MS
 Clay County Medical Center – West Point, MS
 Webster Health Services – Eupora, MS
 Calhoun Health Service – Calhoun City, MS
 Gilmore Memorial Hospital – Amory, MS
 Trace Regional Hospital – Houston, MS
 Gentiva Home Healthcare Services
 Baptist Memorial Home Health
 North Mississippi Home Health
 Golden Living – Tupelo
 Golden Living – Eupora
 Sunshine Health Care
 Graceland Care Center
 Baldwin Nursing Facility
 Webster County Nursing Home
 Calhoun County Nursing Home
 Cedars Health Center
 NMMC – Pontotoc Nursing Home
 Gentiva Hospice Care

THREE RIVERS CDE

BOARD OF DIRECTORS

J. R. Denton	Ernie Wright
Anderson McFarland	Danny Jordan
Danny Holley	Rick Maynard
Mike Roberts	Mike Staten
Cleavon Smith	Shane Clayton
Howard Boozer	John Gaston

ADVISORY COMMITTEE

Walter Zinn	Hob Bryan
Mayor Louise Cole	Preston Sullivan
Les Newcomb	Bill Mobley
Andrew E. Robinson, Sr.	Billy Haynie
Chip Morgan	Kerick Sparrow
David Rumbarger	Jimmy Gouras
Dr. Albert Marks Hine, Sr.	

J.W. KIRKPATRICK AWARD

The Board of Directors of Three Rivers Planning and Development District, Inc. established the J.W. Kirkpatrick Award in 2005. Three Rivers Executive Director, Randy Kelley believed that excellence in leadership promoting Economic and Community Development in our area should be recognized especially when one of our partners showed exceptional contributions to the success of the region. The Board voted to establish the award and present it each year at the annual meeting. The award is named after one of the charter members of the Three Rivers Board of Directors, former Supervisor and Board Chairman, J.W. Kirkpatrick. In addition to naming the award after Mr. Kirkpatrick, the Board voted unanimously to present the first annual award to Mr. Kirkpatrick for his dedicated leadership and service to the area's development accomplishments. Past recipients of the coveted award are:

2005	Mr. J. W. Kirkpatrick
2006	Mr. Clark Littlejohn
2007	Ms. Martha Martin and Mr. Norman Treadaway
2008	Northeast Mississippi Daily Journal
2009	Mr. Buster Davis
2010	North Mississippi Media Alliance
2011	Mr. Reggie Collums
2012	Ms. Catherine Adams
2013	Dr. David Cole

BLUE BOOK

ANNUAL REPORT

A+

NAME Three Rivers & Our Partners

SUBJECT Economic & Community Development

COURSE FY 2014: Perfecting Our Partnership

DATE October 1, 2013 - September 30, 2014

